



---

# Bernù Aero Luxe with Chaise

## Specifications

---

**Designer**  
Davide Tonizzo

## OVERVIEW



- Central beam mounted seating that offers:
  - An innovative aeronautical statement in design
  - Exceptional seating comfort
  - A durable structure in function
- Ergonomically contoured to Dreyfuss Scale Ergonomic Standards for notable comfort and support for long waiting periods.
- Bernù Aero Lounger & Luxe offers single straight (3-5 seats) units. The design is based on a modular approach that enables designers and end users to achieve a wide variety of configurations with a limited number of parts. The unit is supported by a central beam on which all the other elements are fixed using a unique “pin” system. A 21” table can replace any seat
- All castings are offered in satin aluminum finish with bright accents. All painted parts are in environmentally friendly electro-statically applied powder coating.
- Bernù Aero Lounger & Luxe has passed all required ANSI - BIFMA tests for Lounge Seating units.

## CONSTRUCTION DETAILS



### Supporting Beam

- The supporting beam is made from a robust 3” x 1 1/2” (76mm x 38mm) rectangular aluminum extrusion with 3/16” (4.8mm) thick walls. The extrusion design includes two internal webs to maintain the rectangular shape when forming the curved versions of the beams. The beams are heat treated to T5 temper for maximum strength.



### Legs

- Legs are cast aluminum to the specification listed below, and fixed to the beam with a 3/4” (19mm) diameter steel pin. All legs have adjustable leveling glides. Optional anti-slide glides for hard floors and glides for floor mounting are also available.



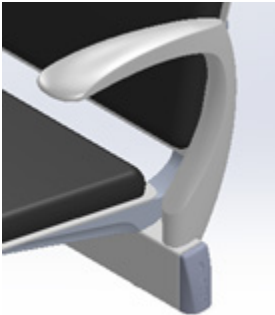
### Seat and Back Supports

- Bernù Aero Lounger & Luxe seats and backs are supported by cast aluminum brackets fixed to the beam by 3/4” (19 mm) diameter steel pins.
- The Bernù Aero Lounger & Luxe seat and back pans are made from 11 gage (3mm) cold rolled steel. They are laser cut and roll formed to the Bernu’s profile. Upholstered seat and back pads are constructed from urethane foam bonded to ABS plastic or plywood forms. All seats and backs follow the ergonomic curves of the equivalent Bernù metal seat and back parts.



## Upholstery

- Upholstered pads for the Bernù Aero Lounger seats and backs are made from 3/8" hardwood plywood inserts, and for the Bernù Aero Luxe seats are made from ABS plastic inserts, matching the curved profile of the seat. Commercial foam sheets are bonded to the insert before the upholstery is installed using staples. Damaged upholstery pads can be changed out by one-for one replacement of the pads. Alternatively, it is easy to remove a pad and re-upholster. A seat or back pad can be removed and replaced without disassembling the seat



## Arms

- The four arm designs are of cast aluminum to the specifications listed below. They are fixed to the beam using 3/4" (19mm) diameter steel pins.
- The loop arm has a sculpted aerodynamic shape enclosing an open loop. All surfaces are satin polished with bright accents.
- The cantilever arm sweeps up from the beam to form a thin horizontal armrest. All surfaces are satin polished with bright accents. The cantilever arm is capped with a dense polyurethane foam arm pad, or can be ordered as an all-aluminum casting without the optional polyurethane foam pads.
- As an added option, the cantilever arm can also be ordered with a fully integrated stainless-steel cup holder. The full integration provides fluid look to the cup holder arm's



## Tables

- Tables are of 3/4" (20 mm) particle board with plastic laminate or 3/4" (20 mm) plastic based solid surface with special embedded nuts for easy assembly. Tables are 21" wide at a height of 18"



## Assembly

- Units are shipped knocked-down (KD) and accompanied by detailed assembly instructions for easy assembly in the field..

## Finish

- Aluminum Castings - satin with bright highlights
- Aluminum Extrusions - Clear anodized
- Steel Parts - Powder coating

## Aluminum Specifications

- All aluminum alloy castings exhibit the following minimum properties.

Tensile Strength	37,000 PSI
Yield Strength	26,000 PSI
Elongation	5.0%
Brinell Hardness	70 (500 kg load 10 mm ball)

## Foam Specifications

- The high resiliency urethane foam is reactively formed with an environmentally friendly water technology. It exhibits the following ratings:

I.L.D.	27/34 lbs
Density	3.5 lbs/cu.ft
Tear Strength	0.75 PPI
Tensile Strength	10 PSI
Hysteresis Loss	22% max
Minimum Compression Modulus	2.2 lbs
Flammability	CAL117

## PRODUCT CONFIGURATIONS

- Depth of single units		
Bernù Aero Lounger		50 1/2" (1285 mm)
Bernù Aero Luxe 2		28 3/8" (720 mm)
- Height of units		44 3/8" (1127 mm)
- Height of seat		17 1/4" (440 mm)
- Width of three seat units		71 3/4" (1820 mm)
- Width of four seat units		94 3/4" (2410 mm)
- Width of five seat units		117 3/4" (3000 mm)